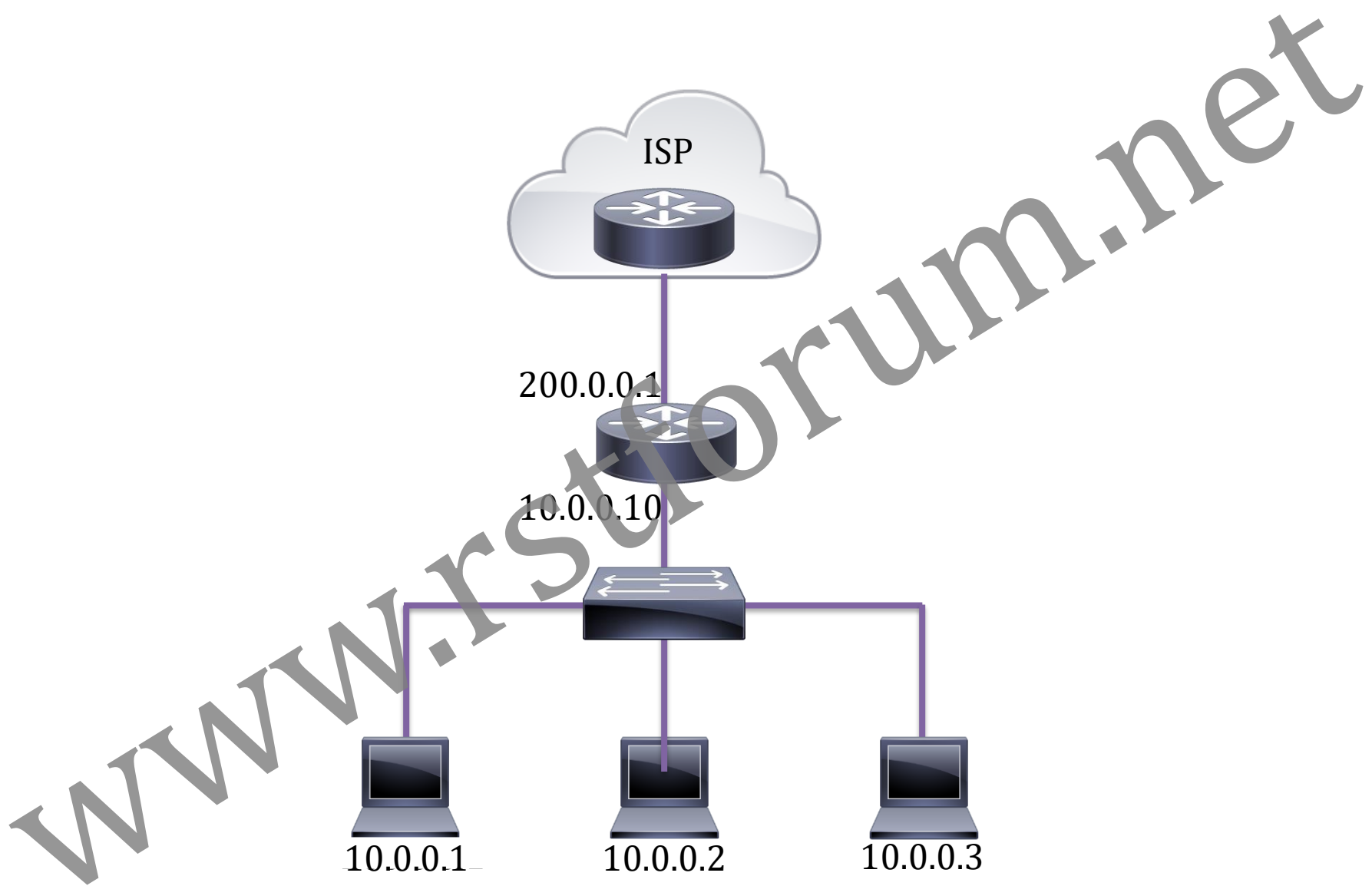


Routing
Switching
Tigers
Forum



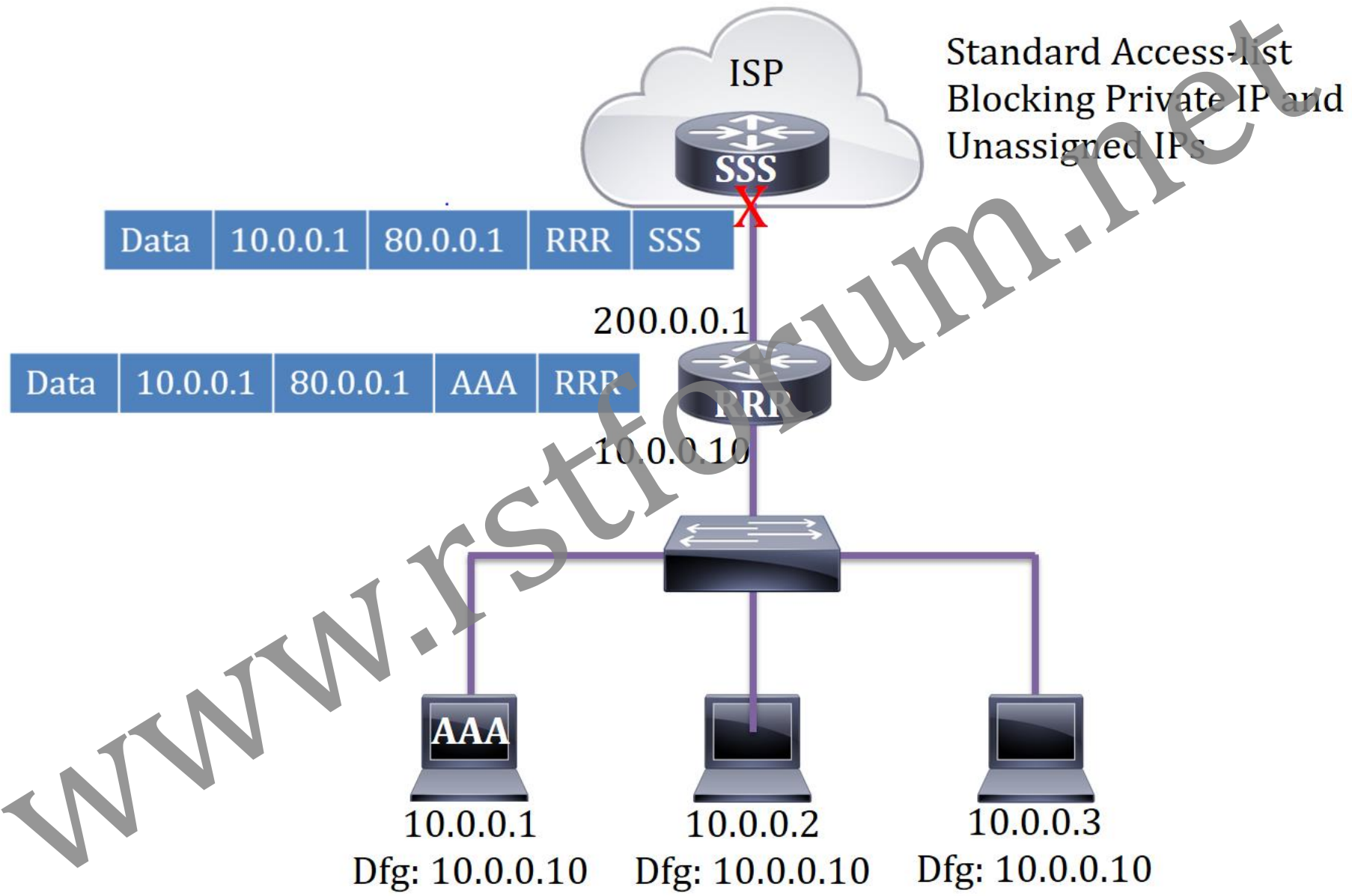
NAT

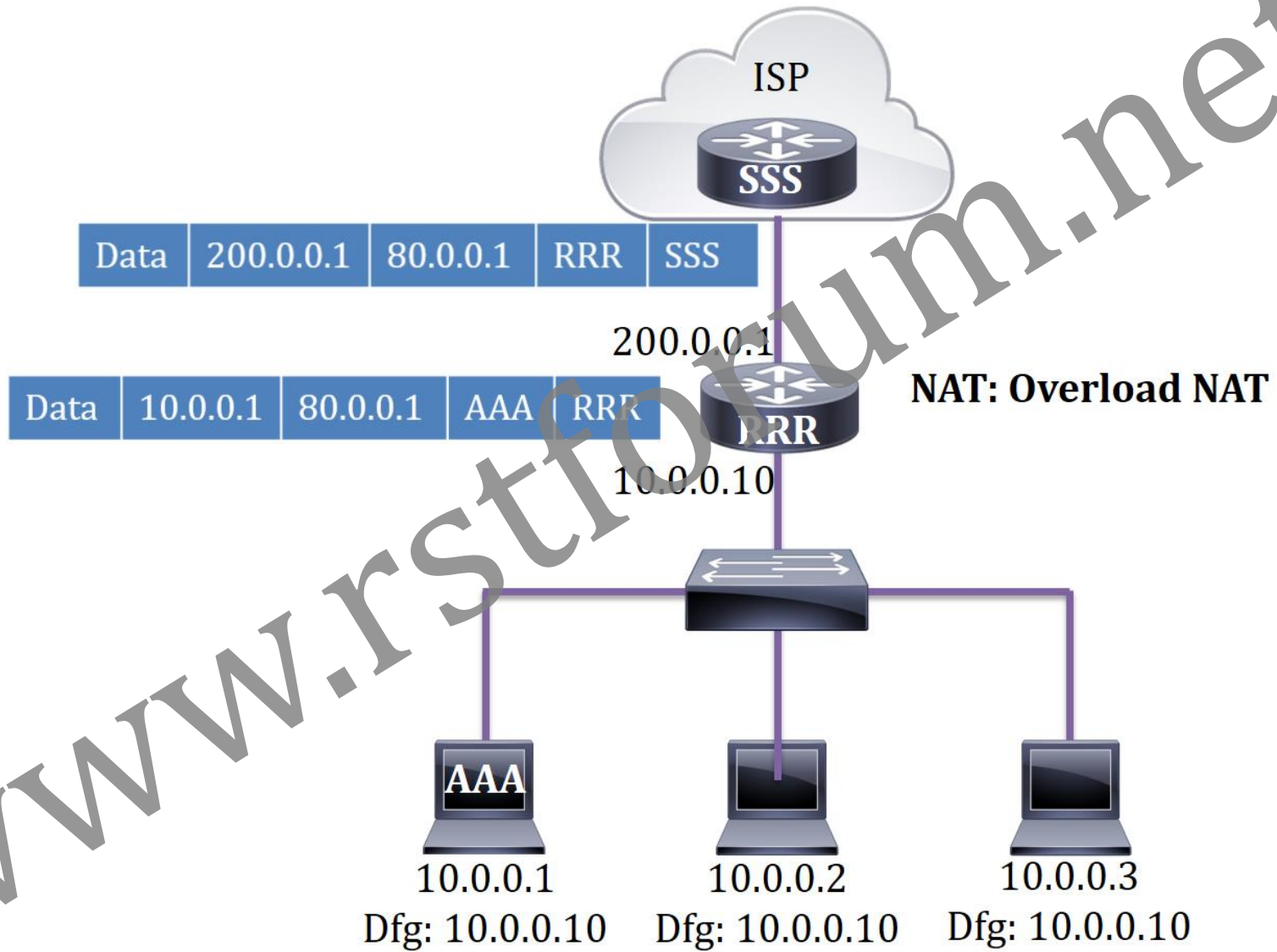


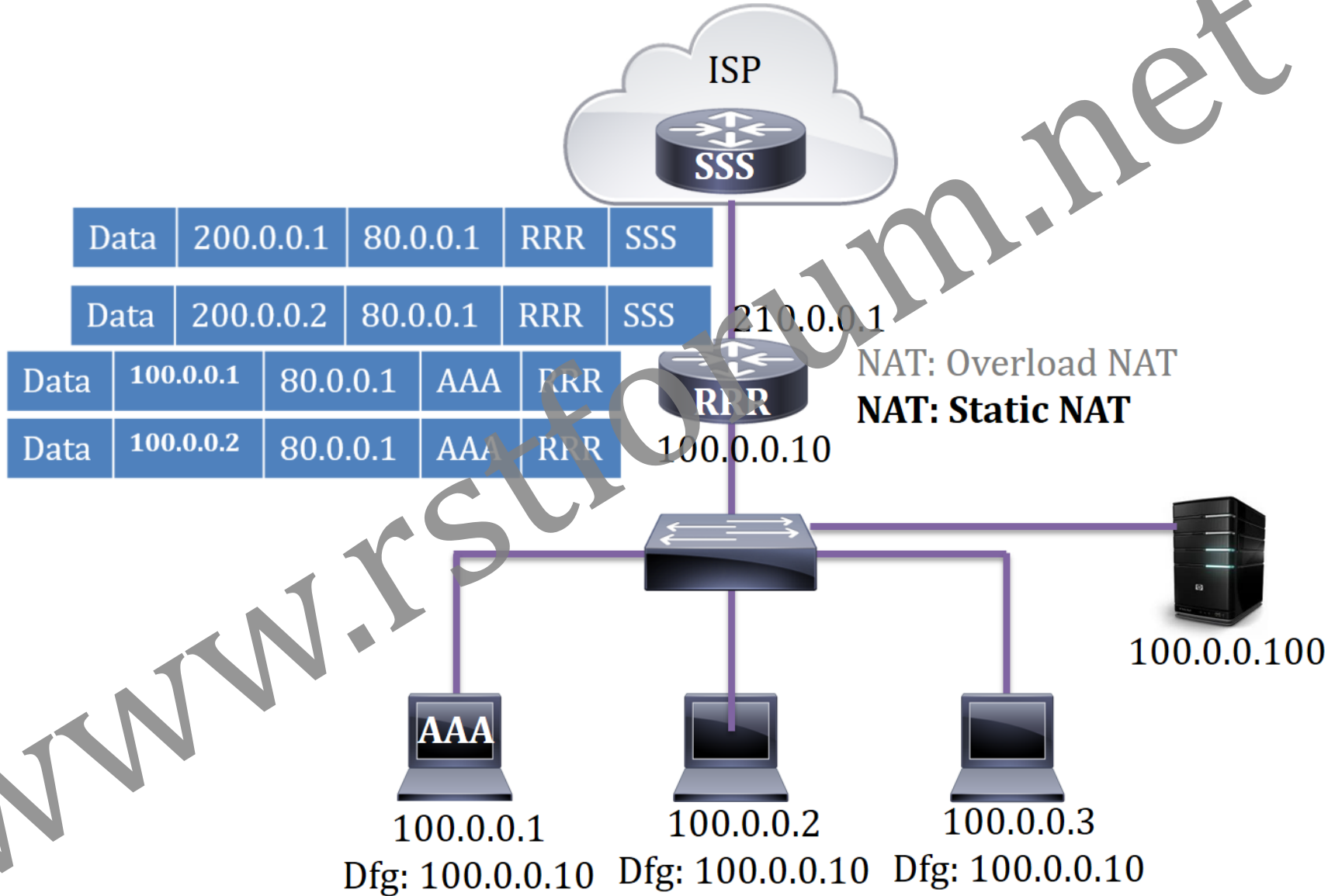
10.0.0.1
Dfg: 10.0.0.10

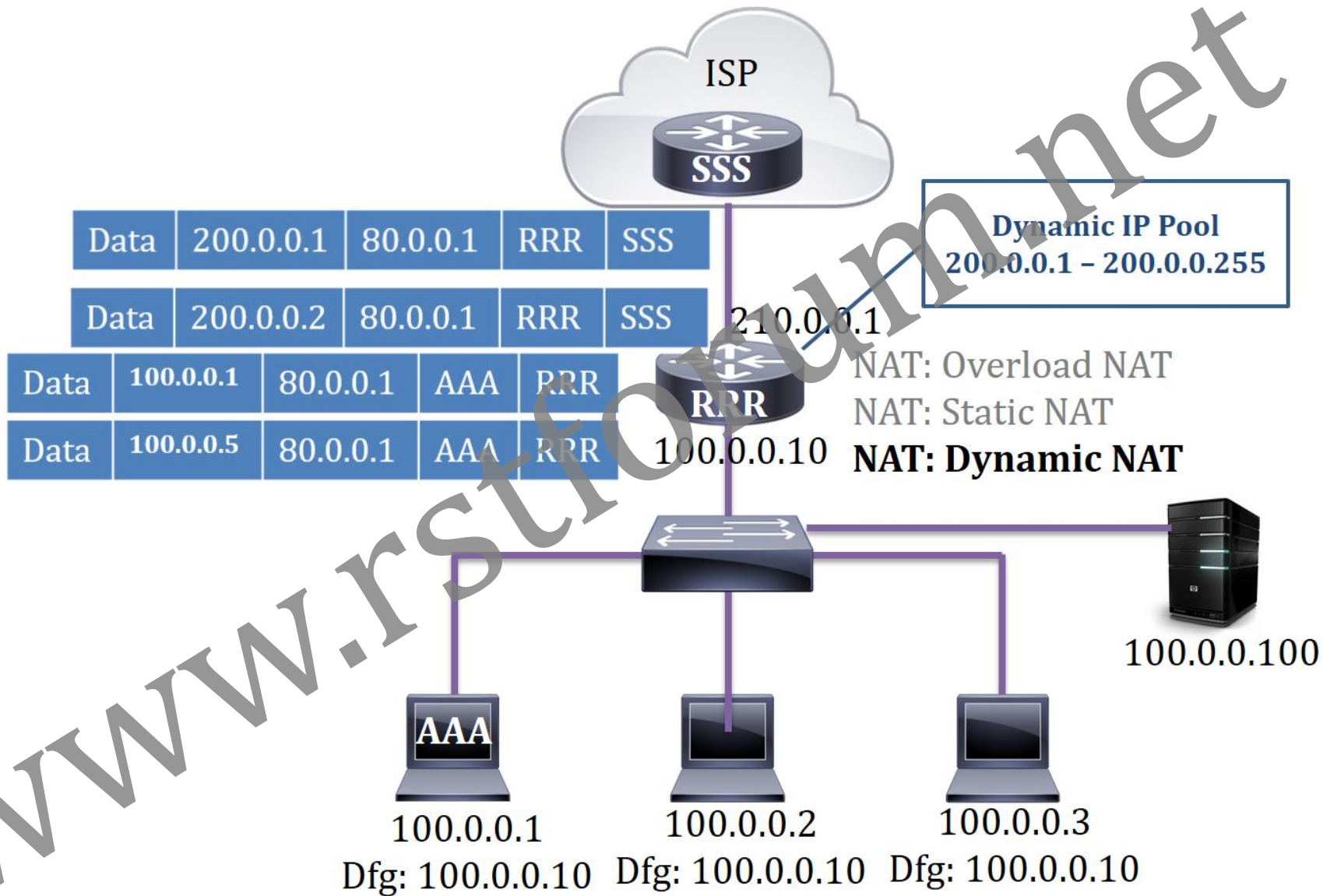
10.0.0.2
Dfg: 10.0.0.10

10.0.0.3
Dfg: 10.0.0.10

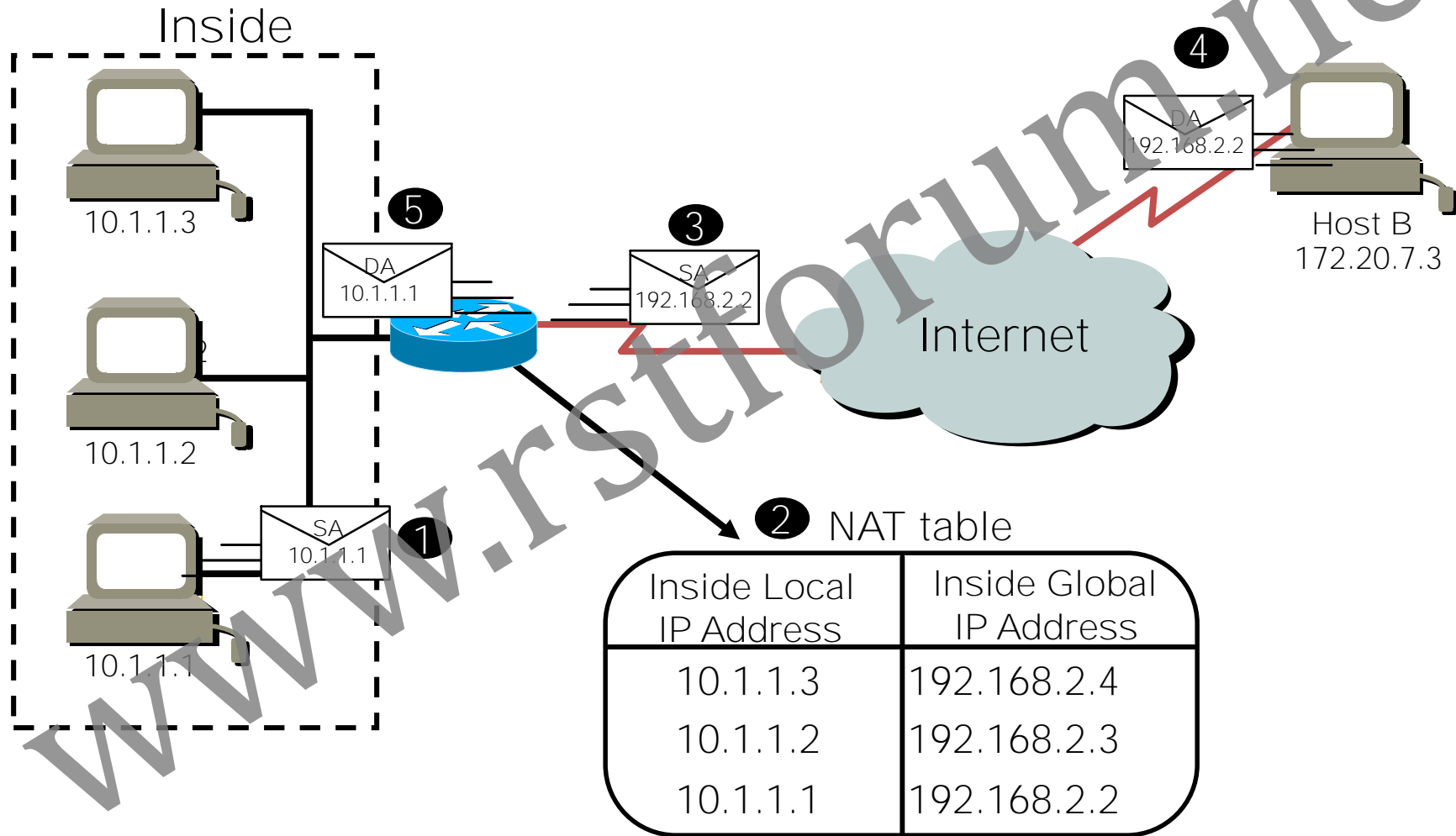








Translating Inside Local Addresses



Static NAT Configuration

```
ip nat inside source static 10.1.1.1 192.168.2.2
!  
interface Ethernet0  
 ip address 10.1.1.10 255.255.255.0  
 ip nat inside  
!  
interface Serial0  
 ip address 172.16.2.1 255.255.255.0  
 ip nat outside  
!
```

This interface connected to the inside network.

This interface connected to the outside world.

Maps the inside local address to the inside global address.



Dynamic NAT Configuration

```
ip nat pool dyn-nat 192.168.2.1 192.168.2.254
    netmask 255.255.255.0
ip nat inside source list 1 pool dyn-nat
!
interface Ethernet0
    ip address 10.1.1.10 255.255.255.0
    ip nat inside
!
interface Serial0
    ip address 172.16.2.1 255.255.255.0
    ip nat outside
!
access-list 1 permit 10.1.1.0 0.0.0.255
!
```

This interface connected to the inside network.

This interface connected to the outside world.

Translate between inside hosts addressed from 10.1.1.0/24 to the globally unique 192.168.2.0/24 network.

Configuring Inside Global Address Overloading

```
ip nat pool ovrlld-nat 192.168.2.1 192.168.2.2 netmask
255.255.255.0 type rotary
ip nat inside source list 1 pool ovrlld-nat overload
!
interface Ethernet0/0
 ip address 10.1.1.10 255.255.255.0
 ip nat inside
!
interface Serial0/0
 ip address 172.16.2.1 255.255.255.0
 ip nat outside
!
access-list 1 permit 10.1.1.0 0.0.0.255
```

Overloading Inside Global Addresses

